

Rudolf Steiner House

THEATRE & ROOM HIRE



A **UNIQUE** VENUE, IN THE HEART OF LONDON

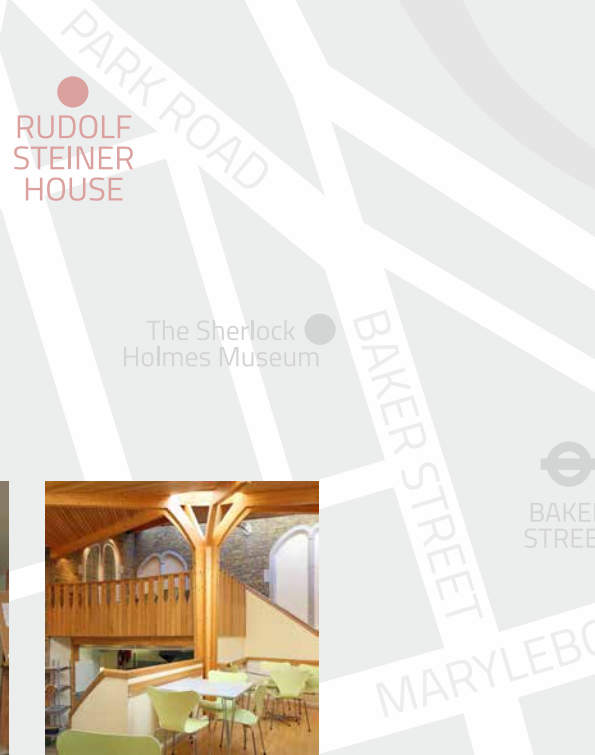
A unique venue in Central London

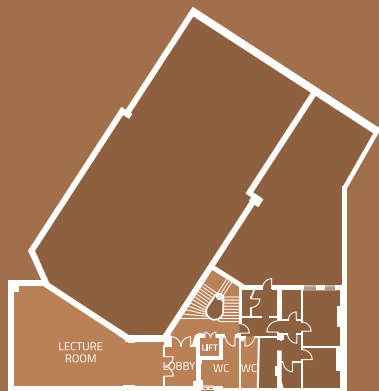
Our Grade II listed building with its intimate hall, foyer and seminar rooms, its organic architecture and serene ambience, is in a convenient and easily accessible location in NW1. Hirers and visitors frequently remark that there is "something special" about this venue. We are confident you will agree. Whether you are looking for a venue for a concert, theatre performance, audition, conference, film screening, seminar, workshop, or just a meeting, we have something to offer you.

We are a few minutes' walk from Baker Street and Marylebone tube stations, Marylebone train station, several bus stops and Regent's Park. It is the location and character of our venue, along with our outstanding customer service, that continue to make us so appreciated by our hirers.

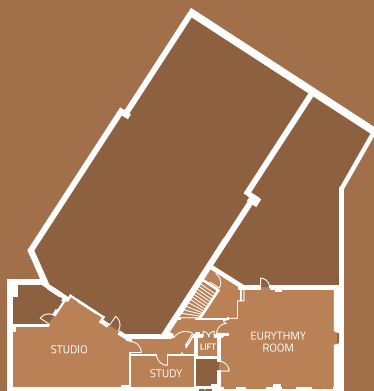
FOR HIRE: Hall (228 capacity) plus 6 additional rooms of varying sizes.

For larger events specialist catering can be provided.

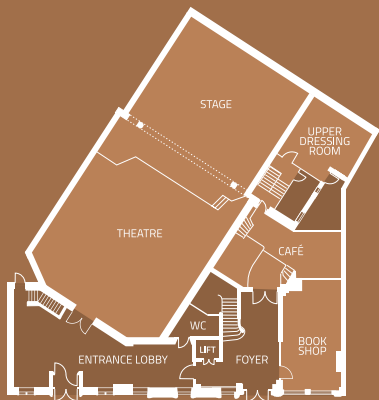




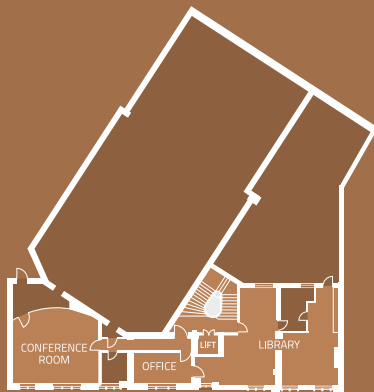
SECOND FLOOR



THIRD FLOOR



GROUND FLOOR



FIRST FLOOR

“ Rudolf Steiner House was a perfect location for our filming. The building is beautiful, rooms spacious and the team were very accommodating to our changing needs and requests. We would definitely visit again. Many thanks for all your help over the past few months. ”

Sana Serroukh | Production Coordinator |
Raw TV | BBC

LIFT ACCESS TO ALL FLOORS

Steiner Hall

OPERAS, MUSIC REHEARSALS AND CONCERTS, CONFERENCES AND SEMINARS, THEATRE AND STAGE PRODUCTIONS

Renowned for its exceptional acoustics, and with a seating capacity of 228 persons, Steiner Hall provides an excellent venue for operas, music rehearsals, auditions, concerts, conferences, theatre and stage productions.

Steiner Hall offers use of a Steinway B grand piano, a wonderfully balanced and versatile instrument sought after by world class artists.



“

We find Rudolf Steiner House to be a wonderfully welcoming location; we use it for our regular movement classes and also give staged performances of opera excerpts in the Steiner Hall. For a venue a few minutes from Baker Street Underground Station, it couldn't be more convenient from an access viewpoint, but what is surprising is what a tranquil and calming space it is; not something one would necessarily expect right in the centre of London.

Chris Loake | Senior Administrator | Royal Academy of Music

”



Steiner Hall

OPERAS, MUSIC REHEARSALS, CONCERTS, CONFERENCES, THEATRE AND STAGE PRODUCTIONS

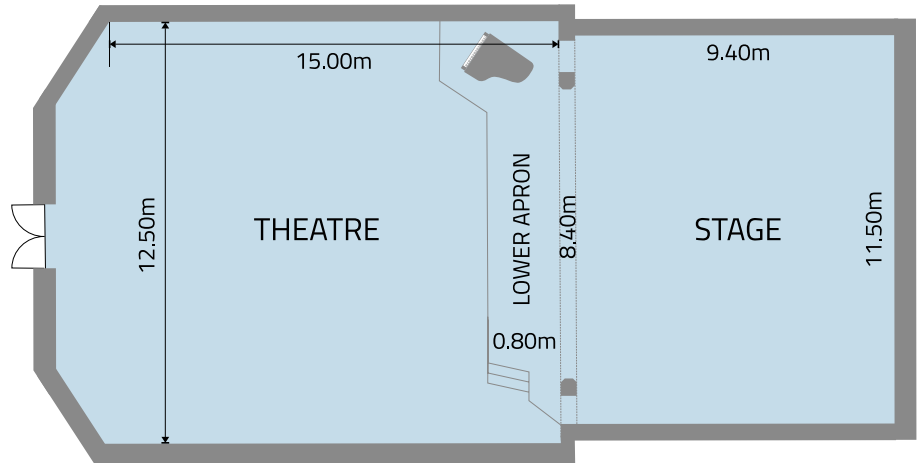


ADDITIONAL SERVICES:

Two dressing rooms

Inhouse theatre technician (on request)

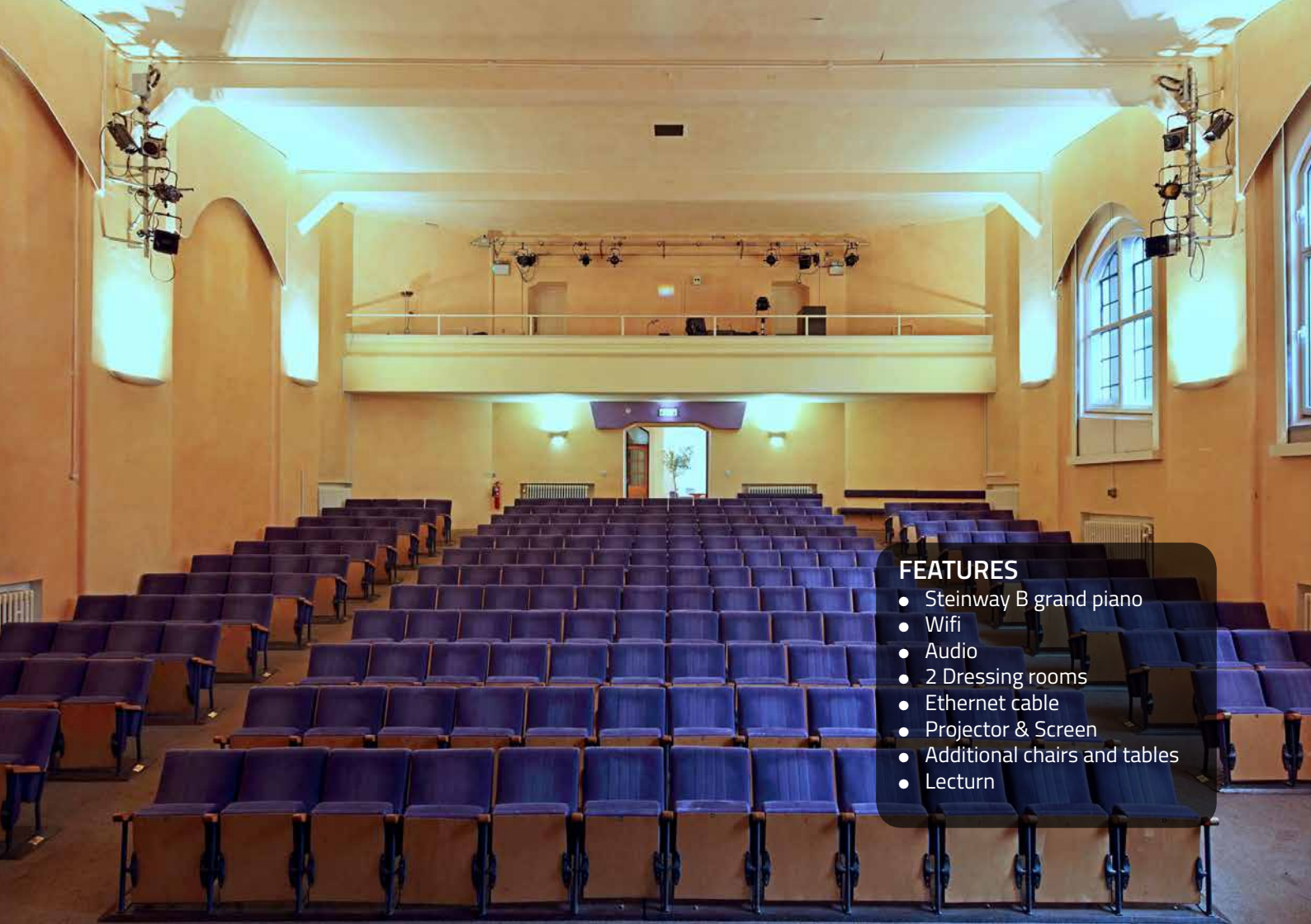
Full catering service (on request)



Glyndebourne uses Rudolf Steiner House theatre regularly for auditions. The staff are always incredibly helpful with the bookings and arrangements for the day. The Steinway grand piano that was new a few years ago is always appreciated by our pianists.



Emily Murray | Assistant to the Director of Artistic Administration | Glyndebourne

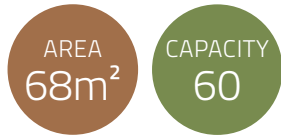


FEATURES

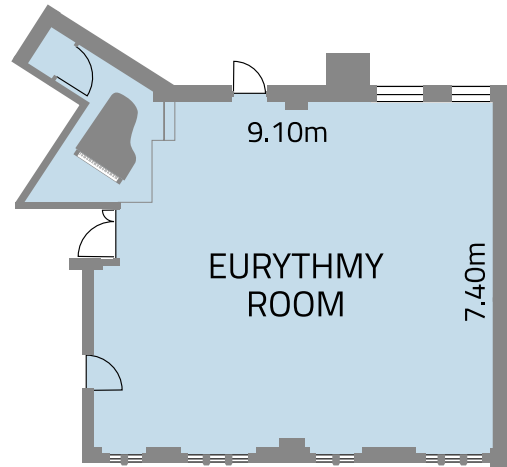
- Steinway B grand piano
- Wifi
- Audio
- 2 Dressing rooms
- Ethernet cable
- Projector & Screen
- Additional chairs and tables
- Lecturn


Eurythmy Room

SEMINARS, LECTURES, WORKSHOPS, BOARDROOM MEETINGS, REHEARSALS, DANCE AND MOVEMENT



Located on the top floor, this is a beautiful, spacious and light-filled room. Wooden panelled walls and a sprung wooden floor contribute to its special atmosphere. The room lends itself to multiple uses. Lift access.



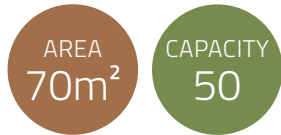


FEATURES

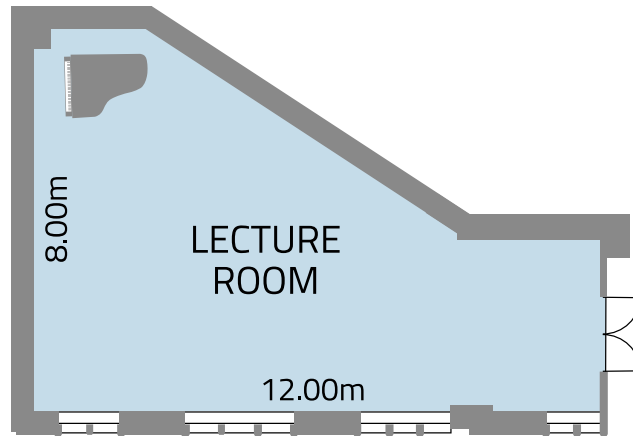
- Wifi
- Audio
- Projector & Screen
- Piano
- Additional chairs and tables
- Lecturn
- Whiteboard/Blackboard

Lecture Room

SEMINARS, LECTURES, WORKSHOPS, BOARDROOM MEETINGS, REHEARSALS



This room is often used for lectures but easily lends itself to many other types of events. It has beautiful wooden floors and is equipped with a Smart Board and overhead projector.



“All the rooms are immaculately clean, bright and spacious with a wonderful energy that sets an uplifting and positive atmosphere”.

Ruby Reed
Co-founder | Advaya Initiative





FEATURES

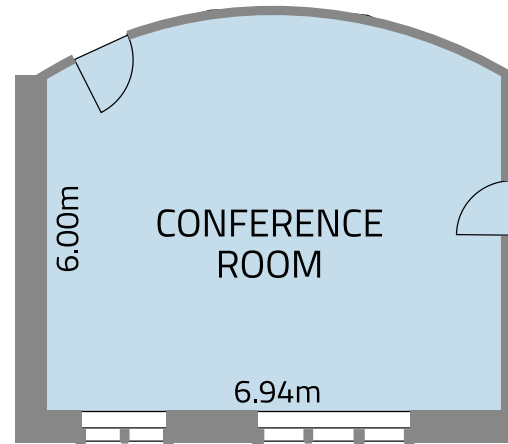
- Wifi
- Audio
- Projector & Screen
- Additional chairs and tables
- Lectern
- Smart Board/Blackboard
- Piano


Conference Room

SEMINARS, LECTURES, WORKSHOPS, BOARDROOM MEETINGS



This parquet-floored room is popular for seminars, workshops, conferences, lectures and smaller boardroom meetings. It is equipped with a Smart Board and overhead projector.



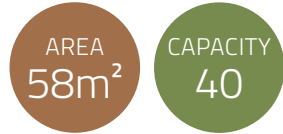
A bright, modern meeting room with blue chairs, a whiteboard, and large windows. The room features a light-colored wooden floor with a herringbone pattern. A row of blue upholstered chairs with wooden frames is arranged in a semi-circle. In the background, there are large windows with white frames, a floor lamp with a white shade, and a whiteboard on a stand. A small sign on the whiteboard reads "Please do NOT write on this whiteboard".

FEATURES

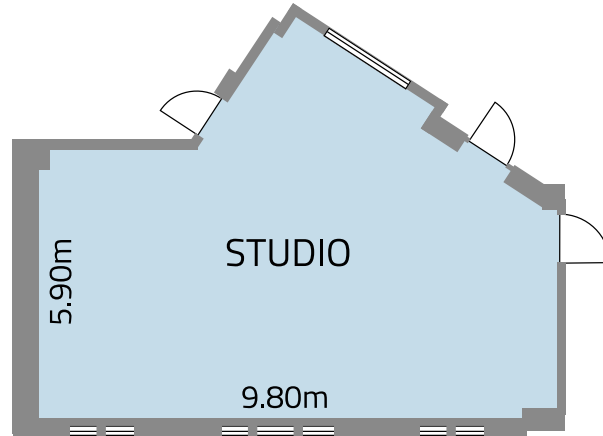
- Wifi
- Audio
- Projector & Screen
- Additional chairs and tables
- Lectern
- Smart Board/Blackboard

Studio Room

SEMINARS, LECTURES, WORKSHOPS, BOARDROOM MEETINGS



Situated on the top floor of the House, this is a striking room with a vaulted ceiling and a large arched window feature. It is equipped with a Smart Board and overhead projector.



FEATURES

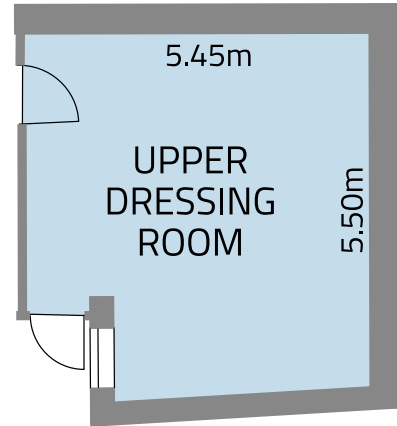
- Wifi
- Audio
- Projector & Screen
- Additional chairs and tables
- Lecturn
- Smart Board

Upper Dressing Room

BOARDROOM MEETINGS, LECTURES, MEETING SPACE, ADDITIONAL DRESSING ROOM



This is located on the ground floor and closest to the café. As the name suggests the room was originally linked with the theatre but lends itself to multiple and flexible uses.



“The space is beautiful, the staff are friendly and helpful and the location is perfect. Rudolf Steiner House is one of London’s hidden gems!”

Jobie Nam | Freelance Film Director





FEATURES

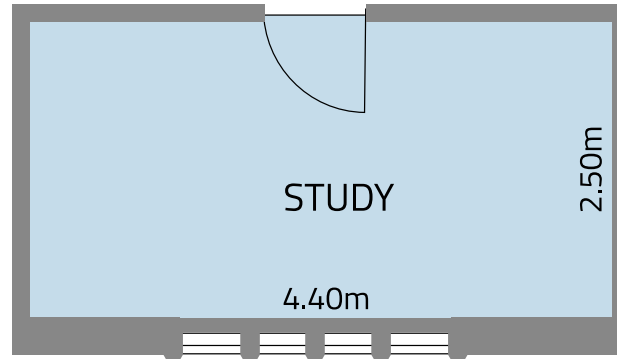
- Wifi
- Audio
- Projector & Screen
- Additional chairs and tables
- Smart Board

Study Room

BOARDROOM MEETINGS, MEETING SPACE



This room is ideal for more intimate gatherings and one-to-one meetings. Situated on the top floor, it has a quiet and peaceful atmosphere.



“Each time the room has been set up exactly as I need it and I can get on with concentrating on what I have to do.”

Tessa Jordan
Founder | Bach Foundation





FEATURES

- Wifi
- Audio
- Additional chairs and tables
- Whiteboard

RSH Café and Catering

Our in-house catering service is brought to you by William Pouget, owner of the award-winning Vaults & Garden Café in Oxford. William is passionate about delicious, healthy, organic and biodynamic food. The menu at RSH Cafe caters for meat-eaters, vegetarians and vegans with hot specials, vibrant salads, delicious cakes, shade-grown coffee, loose leaf teas, and much more.



“ I have been hiring rooms to run courses at the Rudolf Steiner House for several years. The atmosphere in the house is special - welcoming, peaceful, happy and receptive. The staff are helpful and friendly, the cuisine is home made and they cater for special diets too. ”

Tessa Jordan | Homeopath & Trainer
Bach Foundation registered practitioner



Foyer and Bookshop

The Foyer is a welcoming space for mingling, displays and art exhibitions. It features an impressive spiral staircase – a fine and rare example of 1920's expressionist architecture in London. The Foyer can be hired separately of the Hall. With easy street access, it is ideal for exhibitions, book launches and other drop-in events.

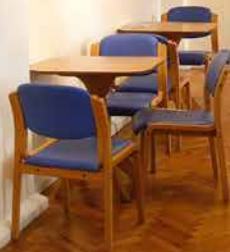
There is also a specialist Bookshop to browse in, which alongside books by Rudolf Steiner and related authors, sells a variety of health and beauty products.

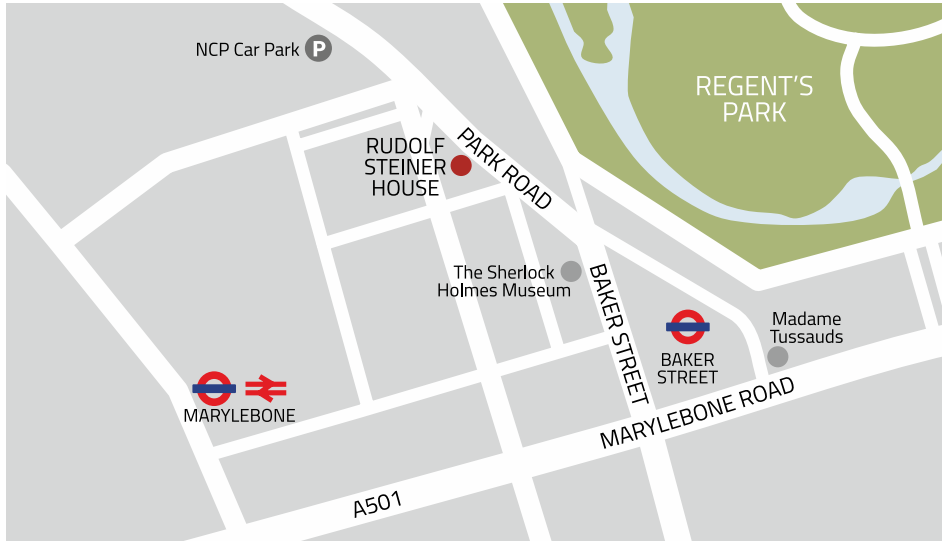


“We particularly enjoy using the Hall at Rudolf Steiner House. It suits our needs perfectly, as it is a large enough space but still feels welcoming. The facilities are excellent, and we particularly enjoy the friendly atmosphere of the building. We always appreciate the service we receive and can highly recommend this for other companies looking for audition or meeting space. As members of our team are often arriving from outside London, its proximity to Marylebone and to major bus routes is also excellent.”

Anna Playfair | Arts Administrator Assistant | Garsington Opera







For bookings and further information
please contact us at
E: rsh-bookings@anth.org.uk
or T: 0207 723 4400

TRAVEL GUIDE:

-  Baker Street, Marylebone
-  18, 27, 30, 74, 113, 139, 189, 205, 453
-  Marylebone Station
-  NCP London Park Road

Rudolf Steiner House

Rudolf Steiner House | 35, Park Road, London NW1 6XT

ANTHROPOSOPHICAL ASSOCIATION LTD. Company number 00209494.